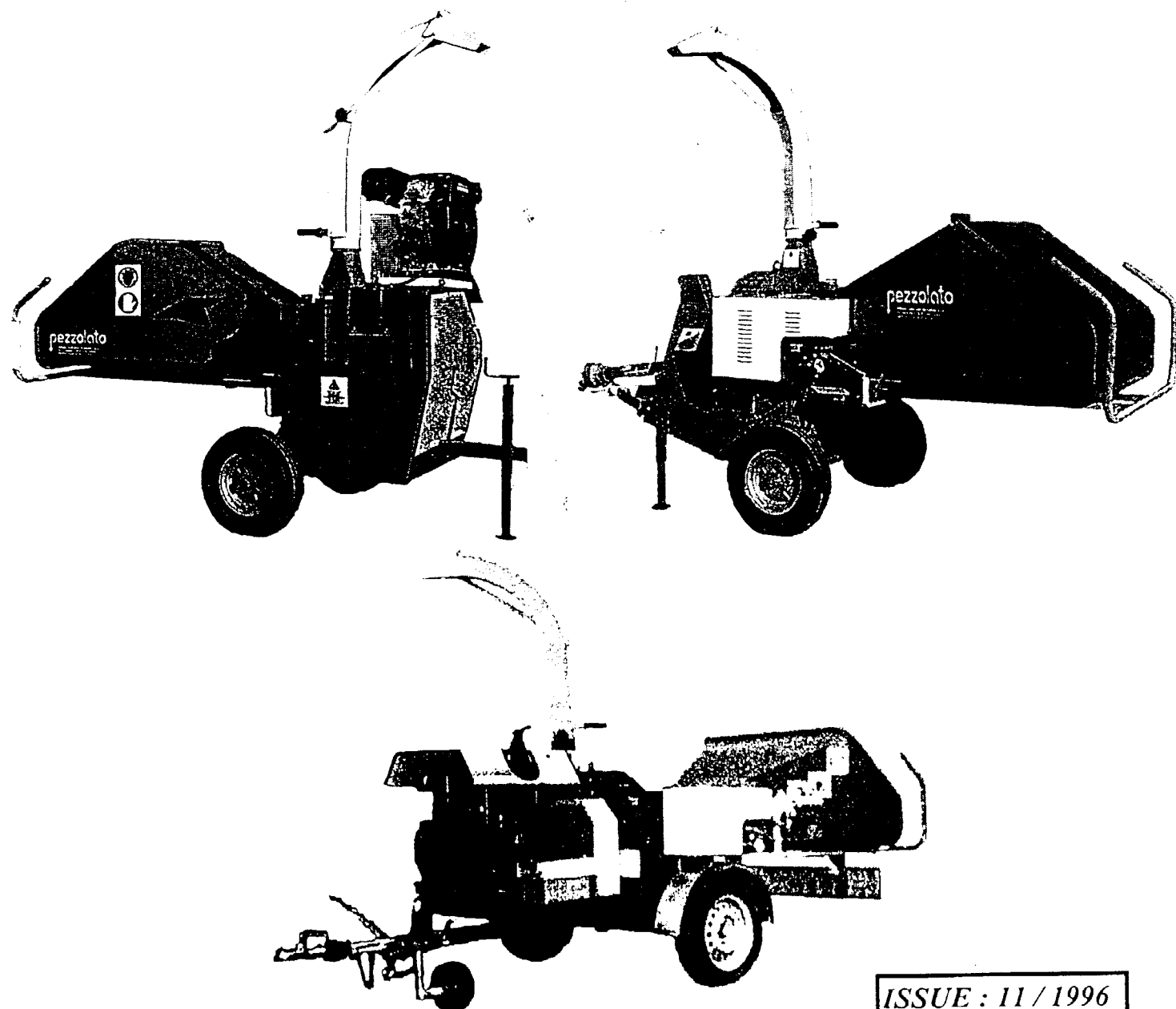


# pezzolato

## PZ 140 mm

### WOODCHIPPER MACHINE

#### Use, Maintenance and Spares Manual



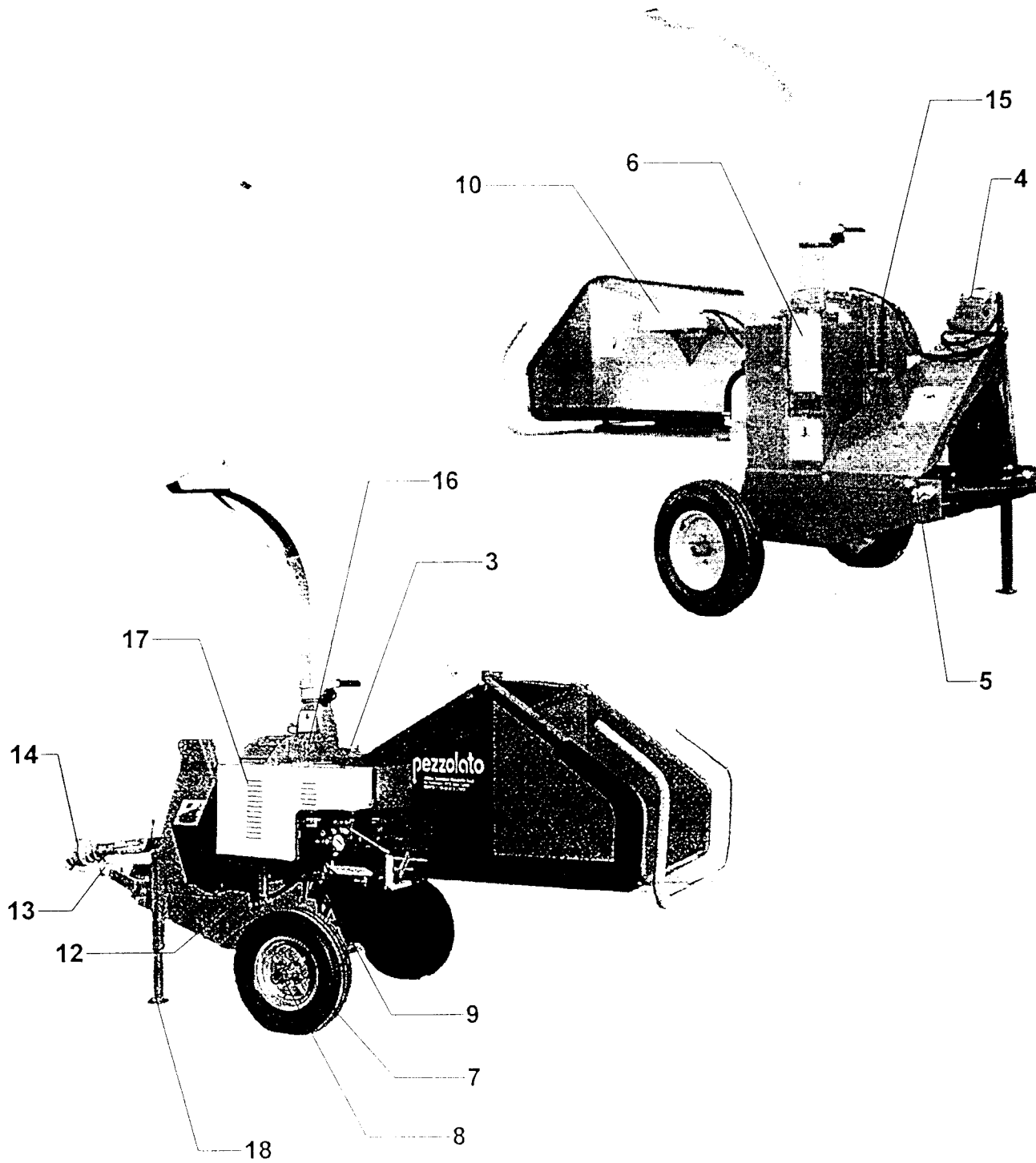
ISSUE : 11 / 1996

PEZZOLATO Officine costruzioni meccaniche S.p.A.  
Tel (0175) 278 077 - Fax (0175) 278 421  
12030 ENVIE ( CN ) - Via provinciale, n° 4

## AGGREGATE MACHINE SPARE PARTS LIST G Version

POS	DENOMINATION	CODE
1		
2		
3	Oil tank cap MINITOR TCLS / Z6G 1" 1/4	0255005003
4	3 point coupling upper pin PTO version	0710000001
5	3 point coupling lower pin PTO version	0710000002
6	Access guard to flywheel housing	3068011000
7	PTO version wheels 4.50 - PR6 4 Bores	0233002010
8	PTO version axle FAD Q.40 L= 1000 4 Bores E404012	0308020200
9	Anvil blade lower guard	3068014200
10	NO - STRESS with hour meter NO - STRESS box	0515000100 0511000001
11		
12	Spring $\varnothing m = 33 \times \varnothing \text{ wire} = 6 \text{ Lp} = 220$	0226020016
13	Slow tow bar	
14	Cardan shaft B & P L= 510 8.104051CE007001	0228104202
15	Screen guard	
16	Hammers extraction guard	
17	Mobile roller guard	
18	Screw jack Q50 x 500	0310003001

Aggregate machine G Version

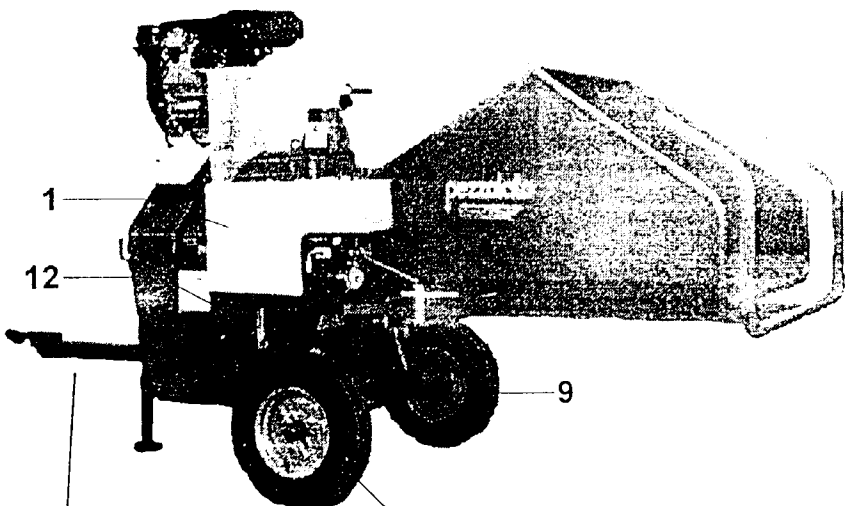


## AGGREGATE MACHINE SPARE PARTS LIST M - b Version

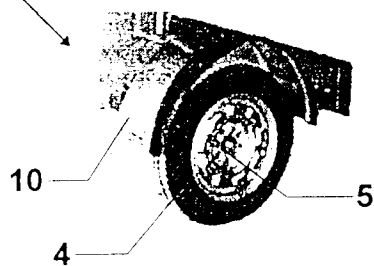
POS	DENOMINATION	CODE
1	Mobile roller guard	
2	Wheels 25 Km/h Honda engine Version	
3	Axle 25 Km/h Honda engine Version	
4	Wheels 80 Km/h Honda engine Version 155 / 70 R13 4 bores 75 T	0233001005
5	Axle 80 Km/h Honda engine Version 600 1625 F 98 x 400 int. 900	0308030400
6	Flywheel room cleaning guard	3068011000
7	Over run device 80 Km/h Honda engine Version ALKO 60 S / 2	0309010004
8	Jockey wheel ALKO 240 x 70	0309040002
9	Anvil blade lower guard	3068014200
10	Splash boards ZINCOGOMMA 220 x 700	0314000100
11	Screw jack Q40 x 500	0310003001
12	Spring $\varnothing m = 33 \times \varnothing wire = 6$ Lp= 220	0226020016
13	80 Km/h Honda engine Version guard	3068910003
14	Driving belts guard 80 Km/h Honda engine Version	3068910004
15	NO - STRESS with hour meter	0515000100
	NO - STRESS box	0511000001

AGGREGATE MACHINE M - b Version

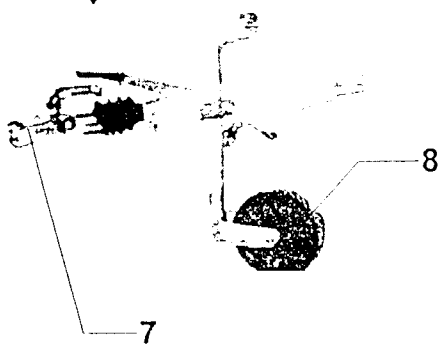
25 Km/h Version.



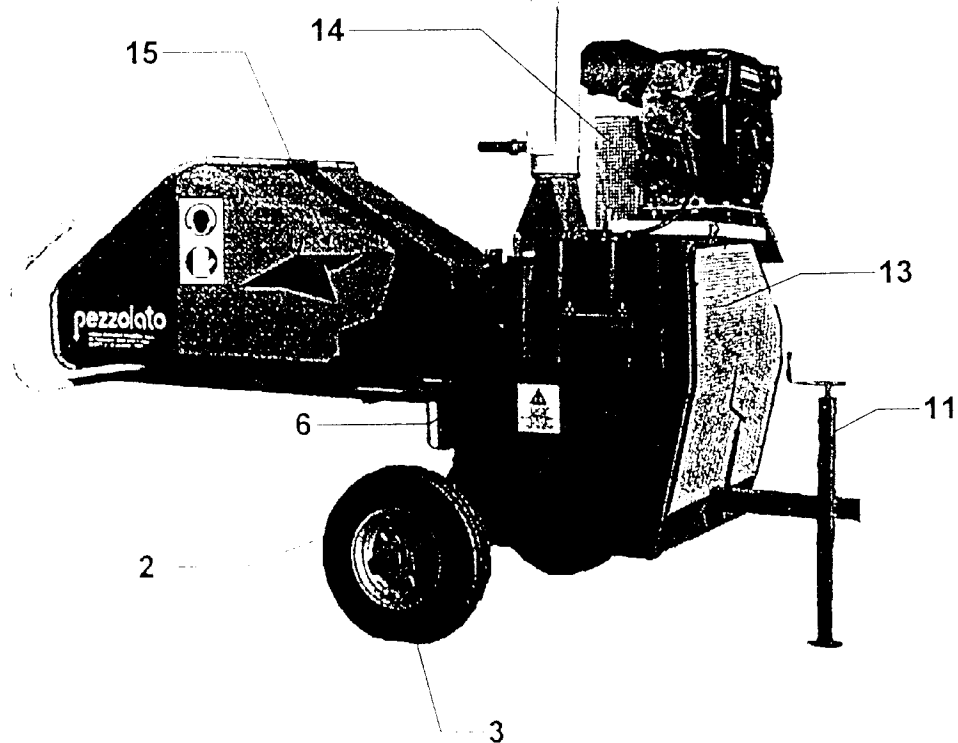
80 Km/h Version.



80 Km/h Version.



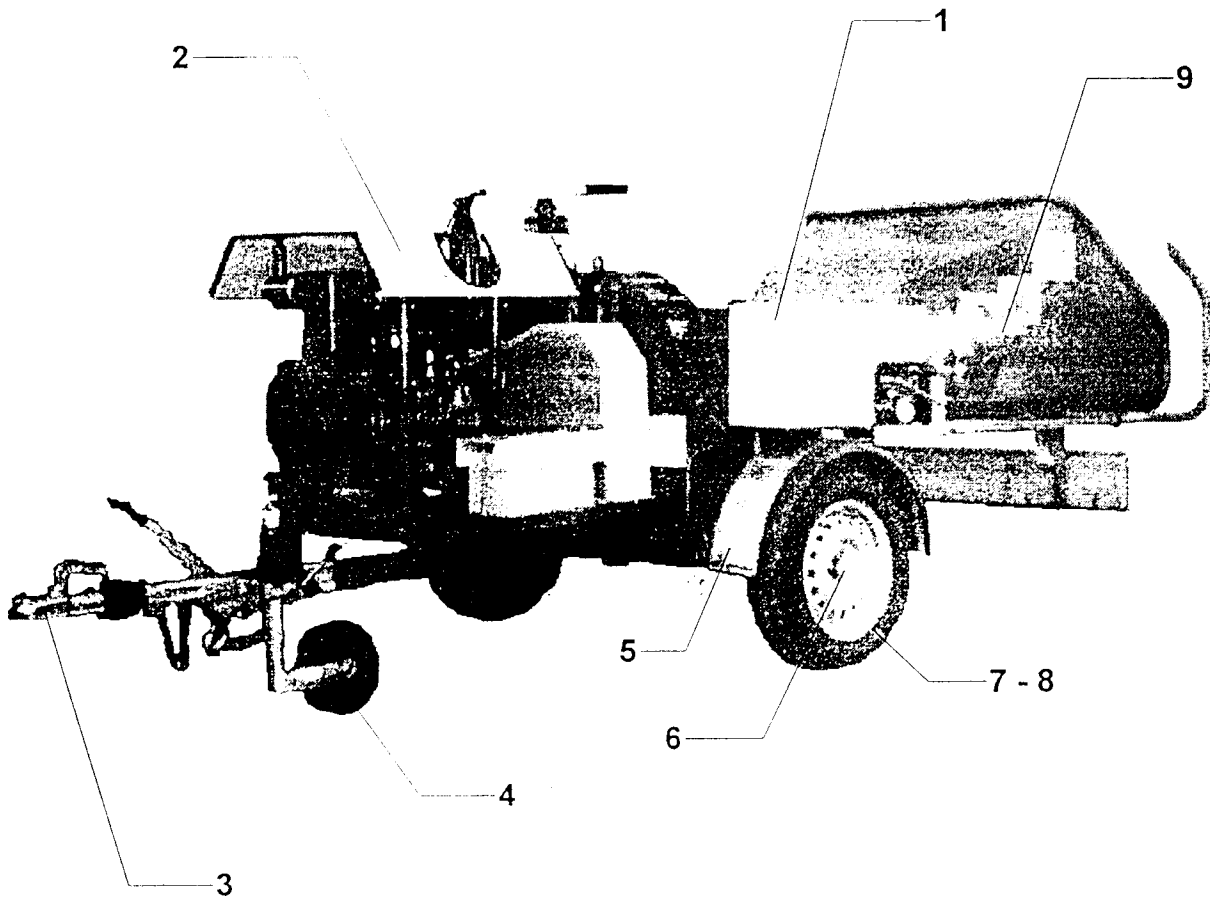
25 Km/h Version.



AGGREGATE MACHINE SPARE PARTS LIST M Version

POS	DENOMINATION	CODE
1	Mobile roller guard	3068910001
2	LOMBARDINI engine version guard	0309010003
3	Over run device Q 90 / S3 (700 - 1000 kg)	0309040002
4	jockey wheel ALKO 240 x 70	0314000100
5	Splash boards ZINCOGOMMA 220 x 700	0308030700
6	Axle LOMBARDINI engine version ALKO 1000-2051A 98x4 INT.900	0233001005
7	Wheels LOMBARDINI engine version 155 / 70 R 13 4F 75T	0233001003
8	Wheel LOMBARDINI engine version 175/70 R13 4F 80 Km/h	0309050001
9	Locking wedges DIN 76051	

AGGREGATE MACHINE M Version

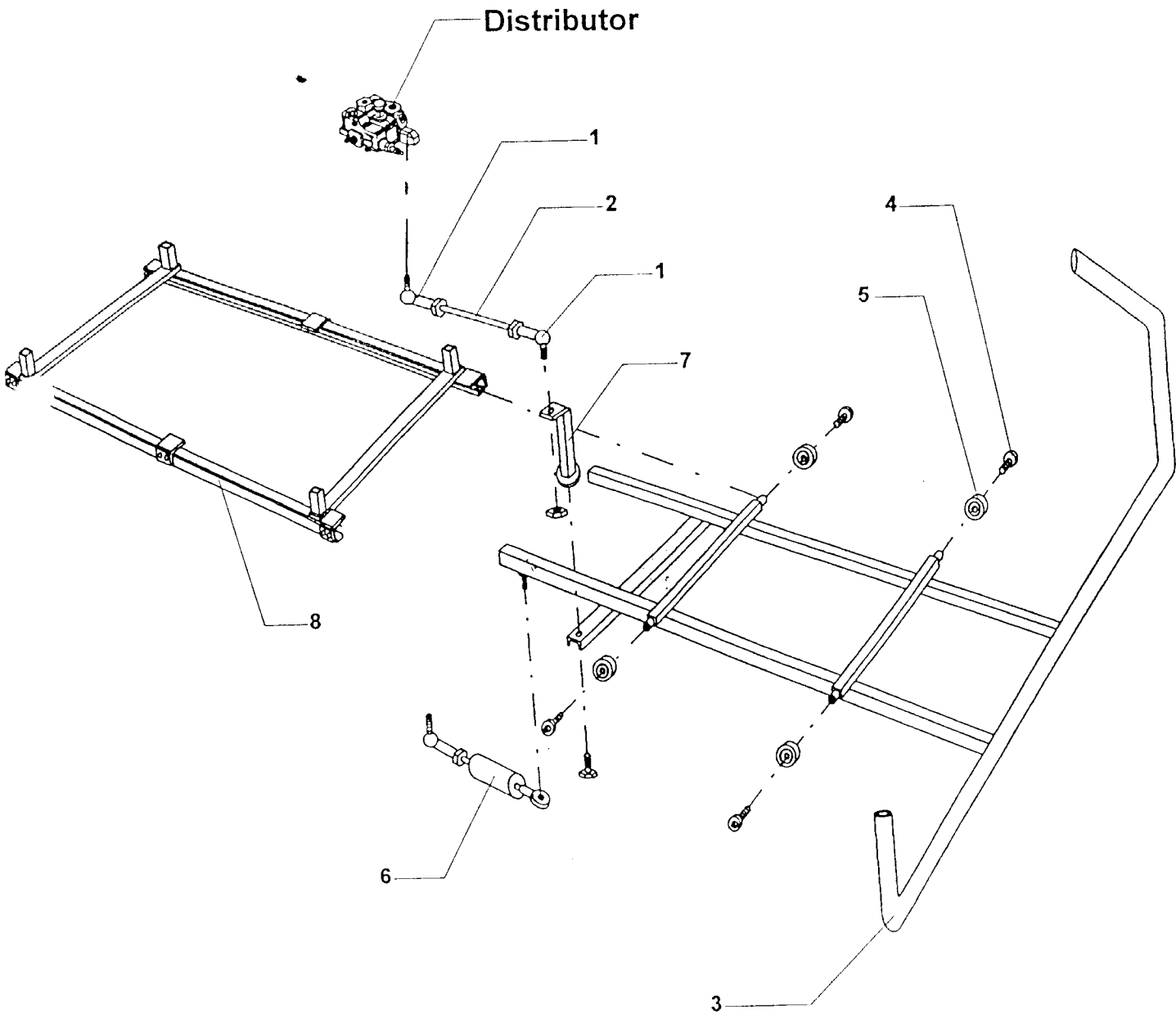


DISTRIBUTOR CONTROL ASSEMBLY SPARE PARTS LIST

POS	DENOMINATION	CODE
1	M8 jointed head	0214010001
2	Push rod	3068900008
3	Distributor control bar	3068910014
4	Screw UMBRACO T.B.E.I. M8 x 15	0250080600
5	Bearing SKF 6201 - 2Z	0229013005
6	Locking cylinder	0798030004
7	Command fulcrum	3068900006
8	Distributor control bar guide	3068910015



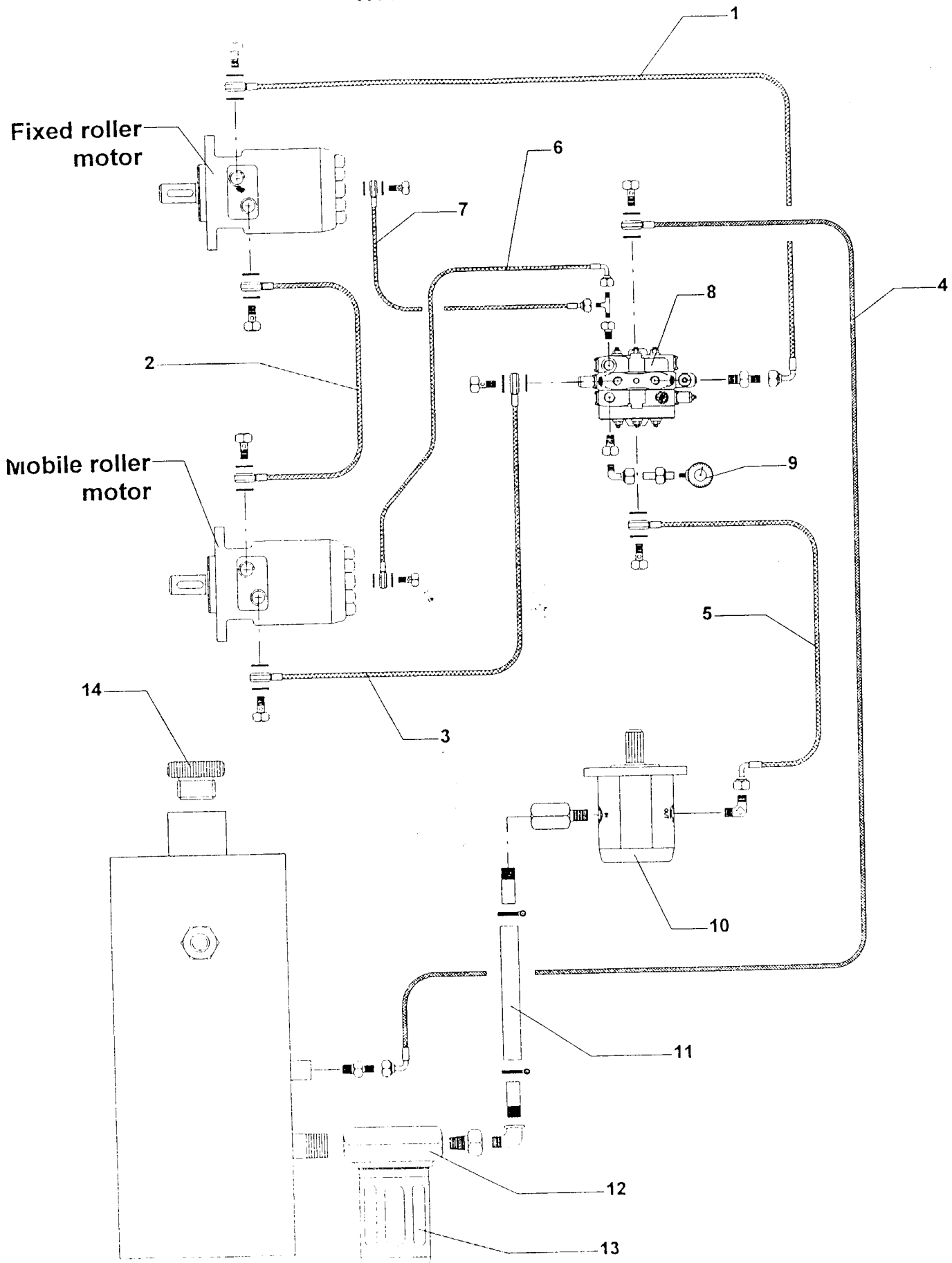
# DISTRIBUTOR CONTROL ASSEMBLY



## HYDRAULIC LAYOUT SPARE PARTS LIST

POS	DENOMINATION	CODE
1	Flex pipe R2T 3/8" H 1/2" + F90° 3/8" L= 1150	0420002226
2	Flex pipe R2T 3/8" H 1/2" + H 1/2" L= 1450	0420002227
3	Flex pipe R2T 3/8" H 1/2" + H 1/2" L= 620	0420002228
4	Flex pipe R2T 3/8" H 1/2" + F90° 3/8" L= 1200	0420002229
5	Flex pipe R2T 3/8" H 1/2" + F90° 3/8" L= 950	0420002230
6	Flex pipe R1T 1/4" H 1/4" + F90° 1/4" L= 670	0420001079
7	Flex pipe R1T 1/4" H 1/4" + FD 1/4" L= 1050	0420001080
8	Distributor VALVOIL SD6 / 1	0406106003
9	Pressure gauge 300 Bar 1/4" MGS10/3/a	0412000300
10	Pump PLP 10.5,8 D/AF	0418110002
11	Pipe RAPISARDA OIL 5 SL ø.19 x L= ( <i>Let Specify</i> ) mm	0421000010
12	Oil filter with cartridge MPS-50 0 P25 AG S	0410100060
13	Cartridge CS 50 MR 25 A	0410100062
14	Oil tank cap MINITOR TCLS / Z6G 1" 1/4	0255005003

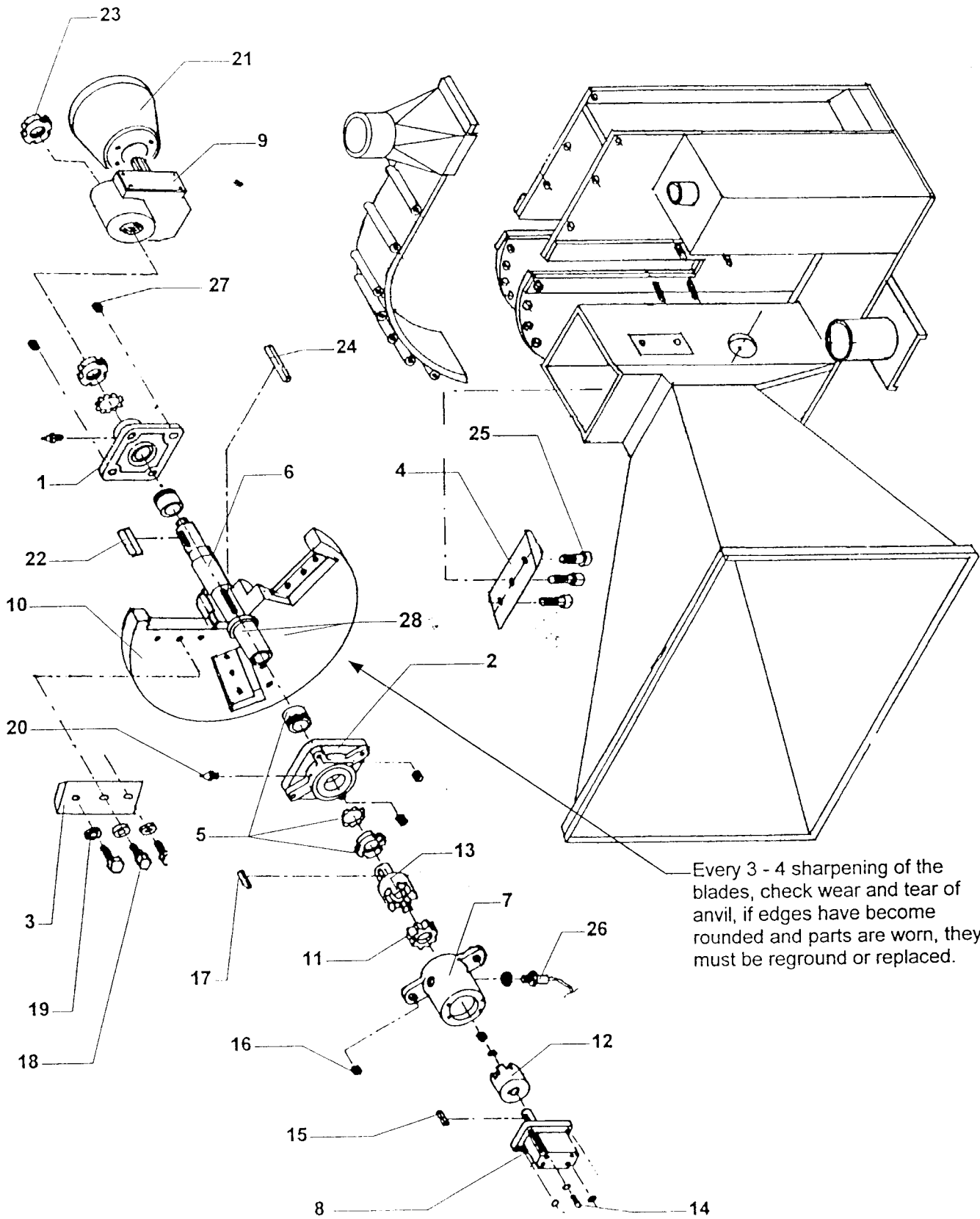
# HYDRAULIC LAYOUT



## CHIPPER DISC SPARE PARTS LIST G Version

POS.	DENOMINATION	CODE
1	Bearing complete UKF 211 + H2311	0230530001
2	Bearing complete UKF 211+ LATHED	0719268001
3	Blade	0704016801
4	Anvil blade	0704016802
5	Taper lock H 2311	0230700001
6	PTO version Shaft	0706680001
7	Pump support	0719268004
8	Pump PLP 10.5,8 D/AF	0418110002
9	Gearbox BIMA M7 Rapp 1/3	0306004000
10	3 Blades Chipper disc	0723010001
11	Rubber block HYDRHAPP D 63	0225220010
12	Coupling (pump side)HYDRHAPP	0225210010
13	Coupling (flywheel side)	0225210020
14	S H C H Screw M6x25	
15	Key 2,38 x 4,2 x 12	
16	Locking nut M18	
17	Key 6 x 6 x 20	
18	S H F H Screw M10x45	
19	Locking nut. M10	
20	Grease cup M6	
21	Cardan guard B & P Cod. 4170402	0239000002
22	Key 10 x 8 x 85	
23	GUK 6 M30 x 1,5 locking nut	0220050030
24	Key 10 x 8 x 110	
25	H H Screw. M12 x 15	
26	NO - STRESS Sensor INDUT BG 12/2 N - FAM	0522000001
27	Locking nut M18	
28	Chipper disc complete with shaft (PTO version)	0723010007
	Cardan B & P L= 510 8.104051CE007001	0228104202

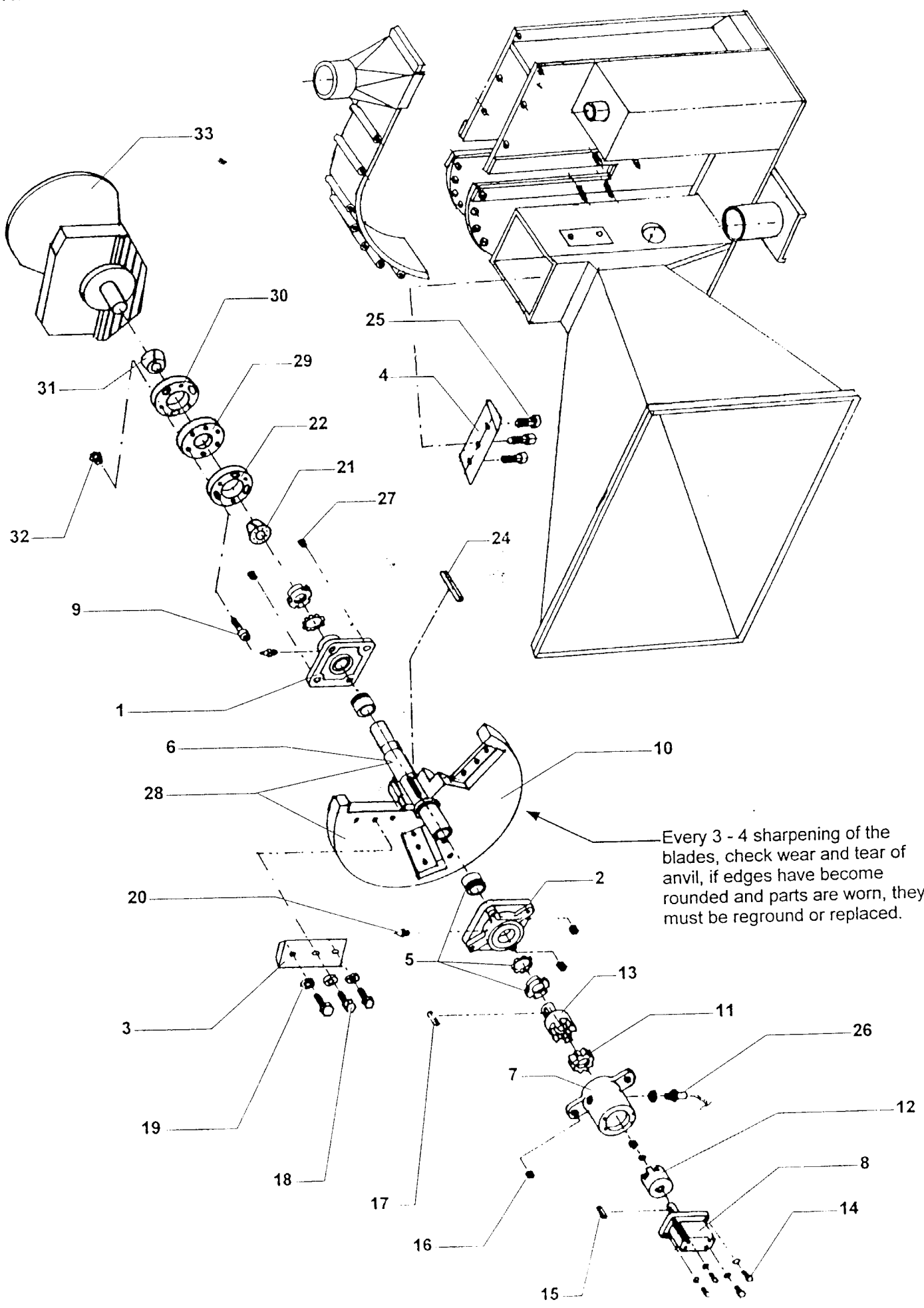
# CHIPPER DISC G Version



CHIPPER DISC LOMBARDINI 9LD 625 - 2 ; LDW 1204 FOCS - M version  
SPARE PARTS LIST

POS	DENOMINATION	CODE
1	Bearing complete UKF 211 + H2311	0230530001
2	Bearing complete UKF 211+ LATHED	0719268001
3	Blade	0704016801
4	Anvil blade	0704016802
5	Taper lock H 2311	0230700001
6	Piston engine version Shaft	0706680004
7	Pump support	0719268004
8	Pump PLP 10.5,8 D/AF	0418110002
9	S H C H Screw. M14 x 80	
10	3 Blades Chipper disc	0723010001
11	Rubber block HYDRHAPP D 63	0225220010
12	Coupling (pump side)HYDRHAPP	0225210010
13	Coupling (flywheel side)	0225210020
14	S H C H Screw M6x25	
15	Key 2,38 x 4,2 x 12	
16	Locking nut M18	
17	Key 6 x 6 x 20	
18	S H F H Screw M10x45	
19	Locking nut. M10	
20	Grease cup M6	
21	Taper lock SIT LOCK 7 40 x 65	0201080004
22	Coupling flange	0799060002
23		
24	Key 10 x 8 x 110	
25	H H Screw. M12 x 15	
26	NO - STRESS Sensor INDUT BG 12/2 N - FAM	0522000001
27	Locking nut M18	
28	Chipper disc complete with shaft (piston engine version)	0723010008
29	Coupling PIRELLI GIUBO 84072 E	0225500200
30	Coupling flange	0799060002
31	Taper lock SIT LOCK 7 40 x 65	0201080004
32	Locking nut M 14	
33	Reduction unit RM 45 S 1.81 + Clutch TECHNODRIVE 111 / 215.4 SAE 9LD	0316104000

CHIPPER DISC LOMBARDINI 9LD 625 - 2 ; LDW 1204 FOCS - M version

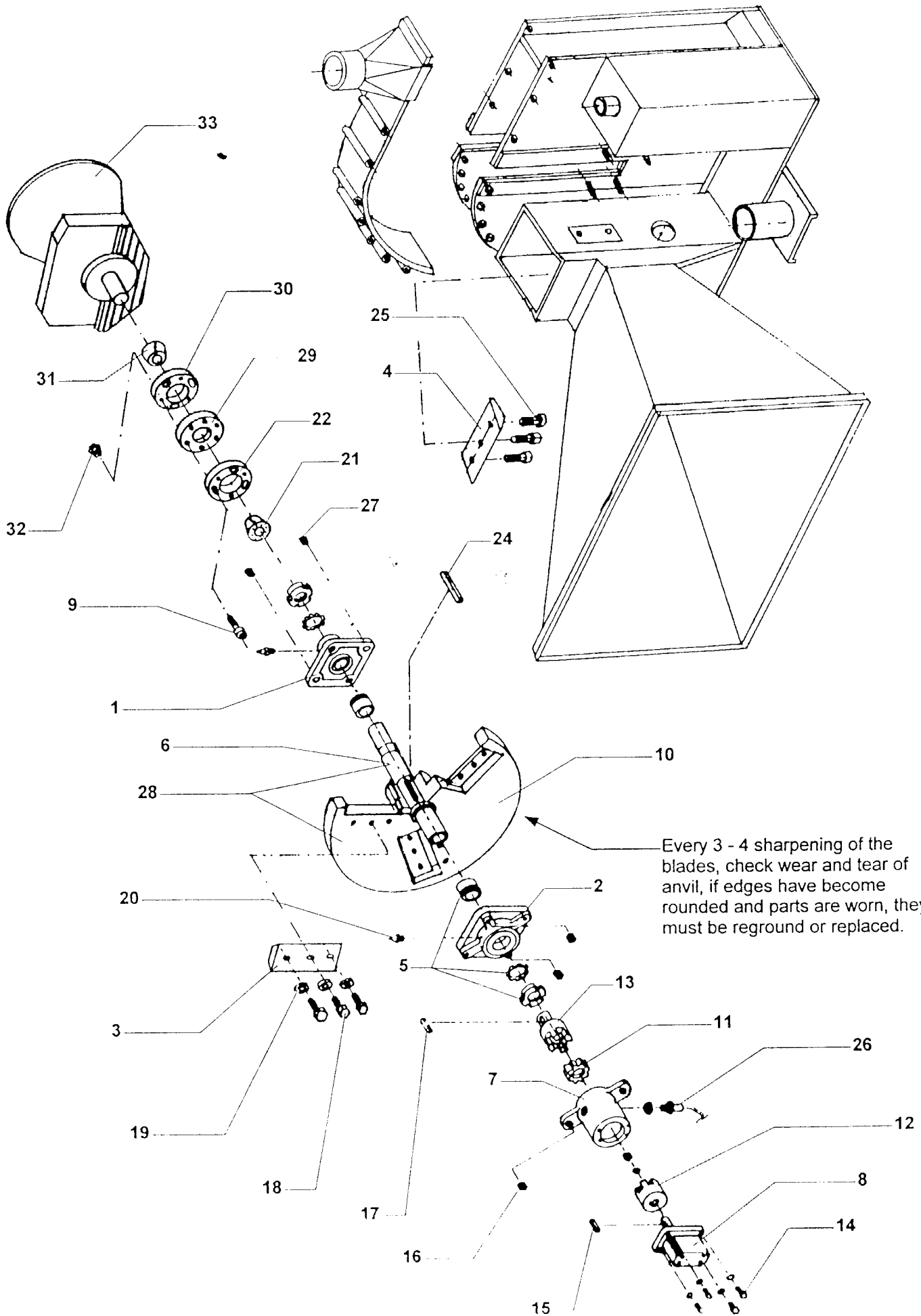


CHIPPER DISC HATZ 2L 40 C / M - s version SPARE PARTS LIST

POS	DENOMINATION	CODE
1	Bearing complete UKF 211 + H2311	0230530001
2	Bearing complete UKF 211+ LATHED	0719268001
3	Blade	0704016801
4	Anvil blade	0704016802
5	Taper lock H 2311	0230700001
6	Piston engine version Shaft	0706680004
7	Pump support	0719268004
8	Pump PLP 10.5,8 D/AF	0418110002
9	S H C H Screw. M10x 80	
10	3 Blades Chipper disc	0723010001
11	Rubber block HYDRHAPP D 63	0225220010
12	Coupling (pump side)HYDRHAPP	0225210010
13	Coupling (flywheel side)	0225210020
14	S H C H Screw M6x25	
15	Key 2,38 x 4,2 x 12	
16	Locking nut M18	
17	Key 6 x 6 x 20	
18	S H F H Screw M10x45	
19	Locking nut. M10	
20	Grease cup M6	
21	Taper lock SIT LOCK 7 40 x 65	0201080004
22	Coupling flange 313.48 Di = 65	0799060003
23		
24	Key 10 x 8 x 110	
25	H H Screw. M12 x 15	
26	NO - STRESS Sensor INDUT BG 12/2 N - FAM	0522000001
27	Locking nut M18	
28	Chipper disc complete with shaft (piston engine version)	0723010008
29	Coupling HEXA FLEX 313 48	0225500300
30	Coupling flange	0799060003
31	Taper lock SIT LOCK 7 40 x 65	0201080004
32	Locking nut M 14	
33	Reduction unit RM 45 SS 1,5 + Clutch TECHNODRIVE BD/118/24 SAE 5	0316105000



CHIPPER DISC HATZ 2L 40 C / M - s version



Every 3 - 4 sharpening of the blades, check wear and tear of anvil, if edges have become rounded and parts are worn, they must be reground or replaced.

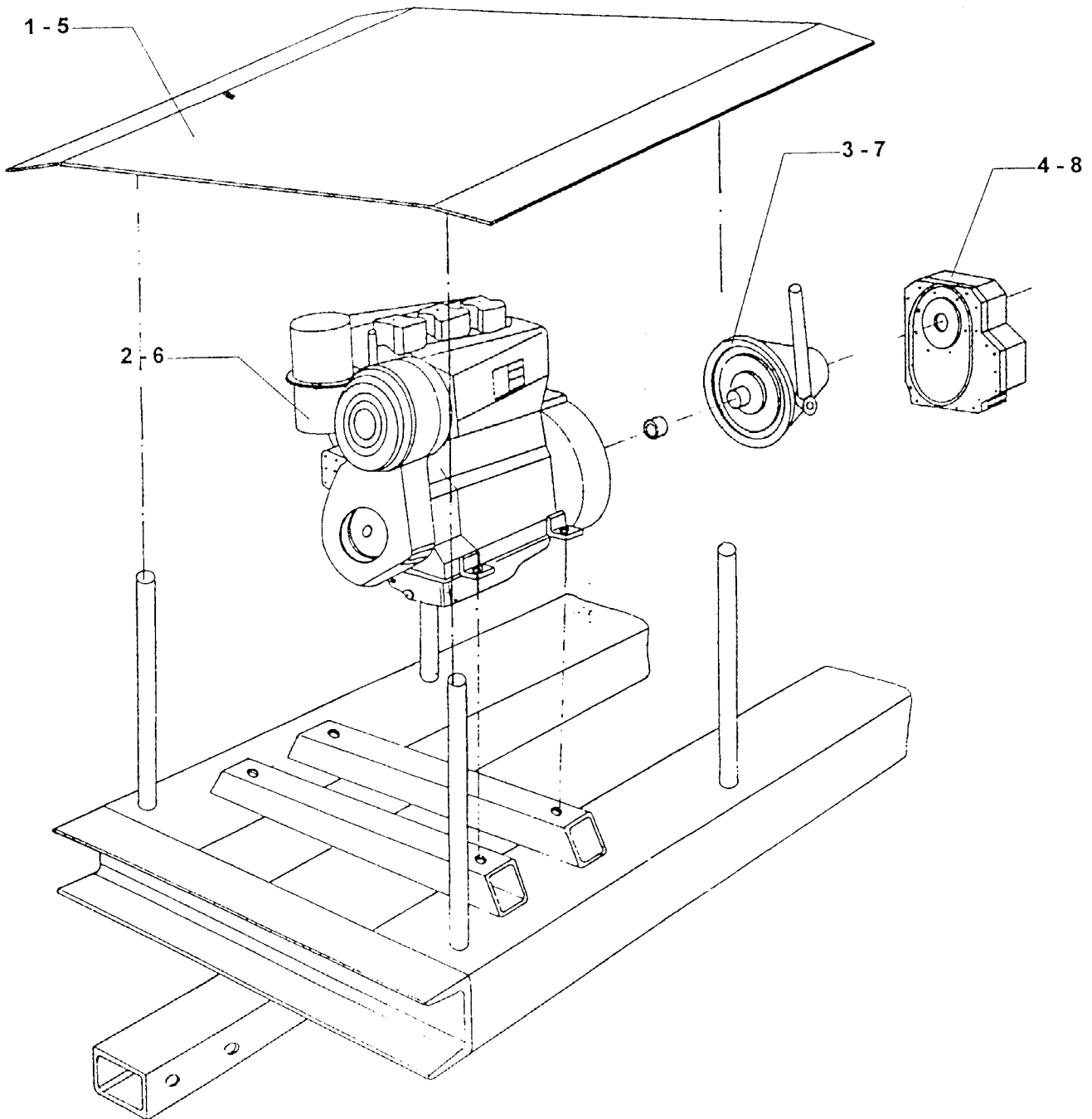
## Engine SPARE PARTS LIST

LOMBARDINI 9LD 625 - 2 ; LDW 1204 FOCS  
HATZ 2L 40 C

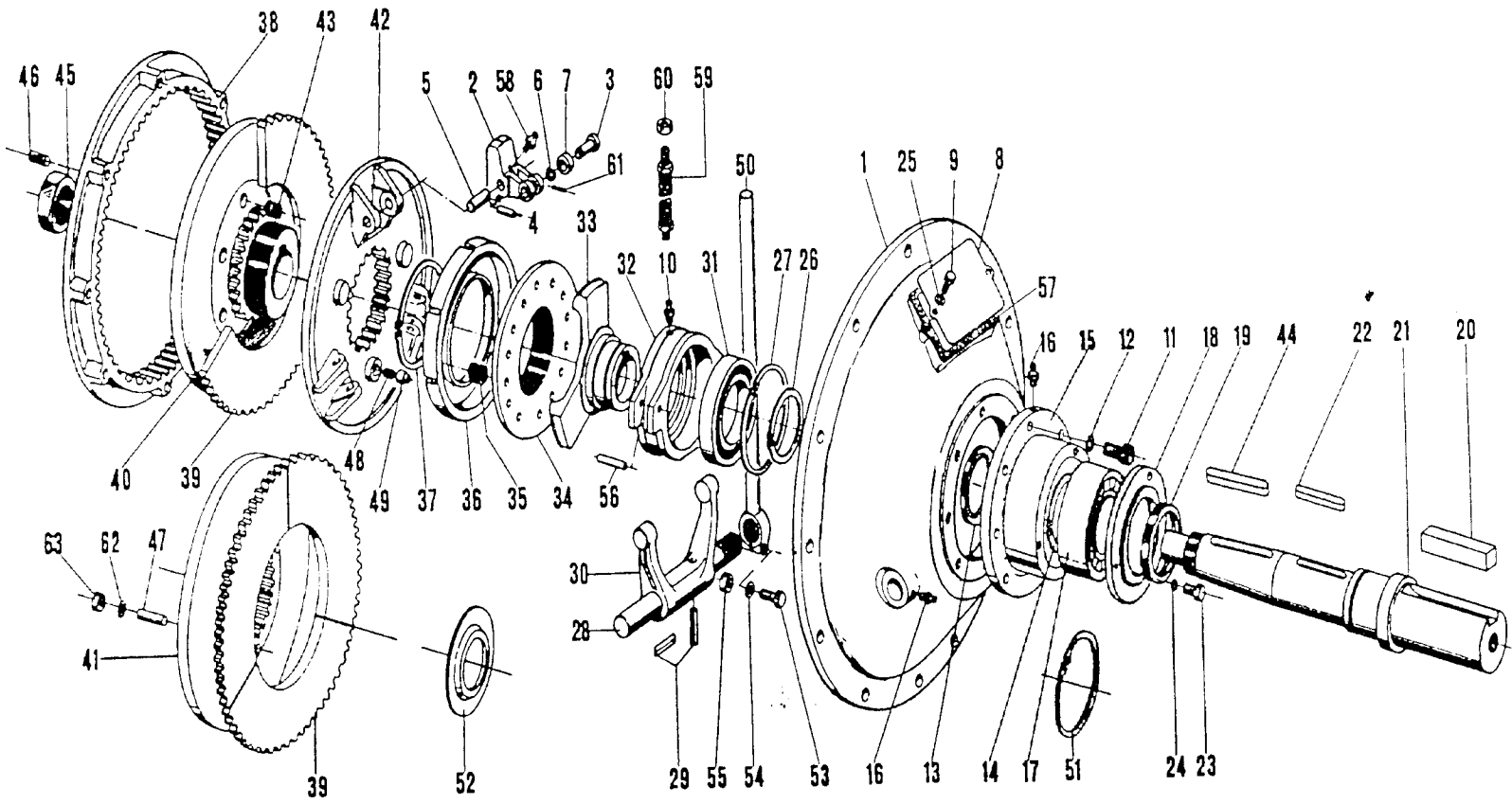
POS	DENOMINATION	CODE
1	Guard for LOMBARDINI Engine 9LD 625 - 2 Version	3068910001
2	LOMBARDINI 9LD 625 - 2 engine	0302080000
	LOMBARDINI LDW 1204 FOCS engine (fluid cooling)	0302090000
3	Vers. LOMBARDINI TECHNODRIVE 111 / 215.4 SAE 9LD clutch	0316302000
4	Vers. LOMBARDINI TECHNODRIVE RM 45 S 1,81 reducer	0316202000
5	Guard for the engine HATZ 2L40C Version	3068910005
6	HATZ 2L40C engine	0302020000
7	Vers. HATZ 2L40C TECHNODRIVE BD 118 / 24 SAE 5 clutch reducer	0316303000
	Vers. HATZ 2L40C TECHNODRIVE RM 45 SS 1,5	0316203000
9		

ENGINE GROUP

LOMBARDINI 9LD 625 - 2 ; LDW 1204 FOCS  
HATZ 2L 40 C



POS.	CODE	DESCRIPTION
1	0316303001	Engine bell HATZ SAE 5
2	0316303002	Lever
3	0316303003	Pin
4	0316303004	Roll pin
5	0316303005	Pin
6	0316303006	Seeger
7	0316303007	Roll
8	0316303008	Plate
9	0316303009	Screw
10	0316303010	Grease cup
11	0316303011	Screw
12	0316303012	Washer
13	0316303013	Oil seal
14	0316303014	Seeger
15	0316303015	Bearing support
16	0316303016	Grease cup
17	0316303017	Bearing
18	0316303018	Little cap
19	0316303019	Oil seal
20	0316303020	Key
21	0316303021	Shaft
22	0316303022	Key
23	0316303023	Screw
24	0316303024	Roll washer
25	0316303025	Washer
26	0316303026	Seeger
27	0316303027	Seeger
28	0316303028	Shaft
29	0316303029	Roll spin
30	0316303030	Staple
31	0316303031	Bearing
32	0316303032	Sleeve
33	0316303033	Order collar sleeve
34	0316303034	Register collar
35	0316303035	Spring
36	0316303036	Load disk spring
37	0316303037	Seeger
38	0316303038	Crown wheel
39	0316303039	Clutch disk
40	0316303040	Fixed pusher disk
41	0316303041	Intermediate disk
42	0316303042	Mobile pusher disk
43	0316303043	Spring
44	0316303044	Key
45	0316303045	Nut
46	0316303046	Stop grain
47	0316303047	Pin
48	0316303048	Spring
49	0316303049	Pin
50	0316303050	Lever
51	0316303051	Seeger
52	0316303052	Little cap
53	0316303053	Screw
54	0316303054	Washer
55	0316303055	Nut
56	0316303056	Roll pin
57	0316303057	Packing
58	0316303058	Grease cup
59	0316303059	Pipe
60	0316303060	Nut
61	0316303061	Roll pin
62	0316303062	Washer
63	0316303063	Nut



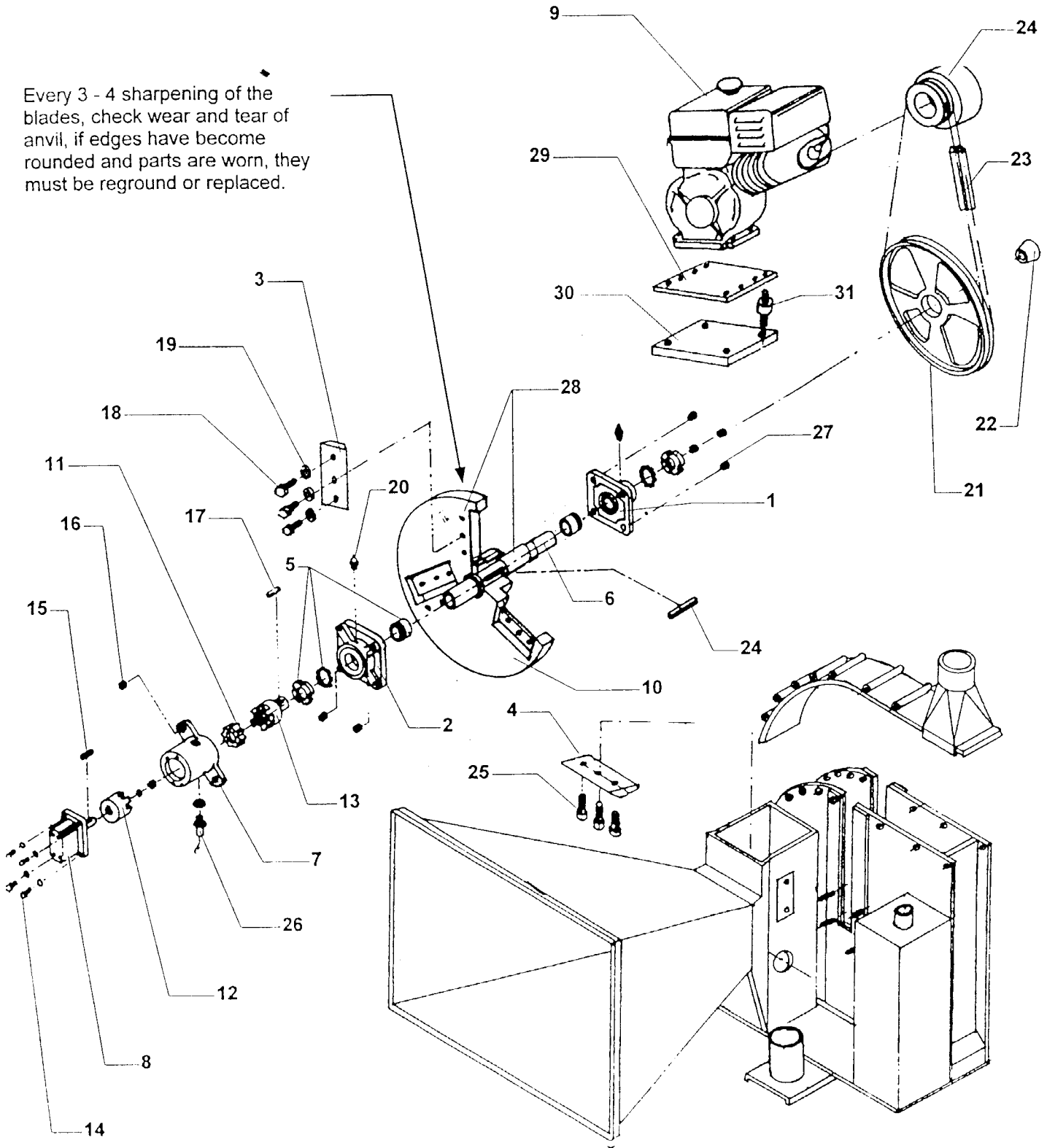
- Per ordinare le parti di ricambio, indicare il numero di riferimento dell'esploso ed il tipo di frizione relativo.  
 Ex. Ricambio N. 39 per BD 112/16 SAE 4.
- To order spare parts, please specify the reference number listed on the drawing and the relative type of Power Take Off.  
 Ex. Spare part N. 39 for BD 112/16 SAE 4.
- Pour commander les pièces détachées, il faut indiquer le numéro de référence de la pièce et le type de Prise de Force.  
 Ex. Pièce détachée N. 39 pour BD 112/16 SAE 4.

CHIPPER DISC HONDA GX 620 M - b version SPARE PARTS LIST

POS	DENOMINATION	CODE
1	Bearing complete UKF 211 + H2311	0230530001
2	Bearing complete UKF 211+ LATHED	0719268001
3	Blade	0704016801
4	Anvil blade	0704016802
5	Taper lock H 2311	0230700001
6	HONDA GX 620 Version shaft	0706680004
7	Pump support	0719268004
8	Pump PLP 10.5,8 D/AF	0418110002
9	Honda GX 620 20 Hp petrol engine version	0301060000
10	Two blades chipper disc	0723010006
11	Rubber block HYDRHAPP D 63	0225220010
12	Coupling (pump side)HYDRHAPP	0225210010
13	Coupling (flywheel side)	0225210020
14	S H C H Screw M6x25	
15	Key 2,38 x 4,2 x 12	
16	Locking nut M18	
17	Key 6 x 6 x 20	
18	S H F H Screw M10x45	
19	Locking nut. M10	
20	Grease cup M6	
21	Pulley D. 335 2SPA d. 80 VBK	0231082209
22	Taper lock SIT LOOK 7 40-65	
23	Driving belt SpA 1832 n°2	0217111832
24	Centrifugal pulley MGP PAF 101/F 2 Races SpA for engine GX 620	0231070004
25	H H Screw. M12 x 15	
26	NO - STRESS Sensor INDUT BG 12/2 N - FAM	0522000001
27	Locking nut M18	
28	Two blades chipper disc complete with shaft (piston engine version)	0723010009
29	Plate for HONDA engine	3068900001
30	Plate for driving belts tension register	3068900002
31	Anti vibrating rubber blocks 50 - 30/6 M 10	0216000004

CHIPPER DISC HONDA GX 620 M - b version

Every 3 - 4 sharpening of the blades, check wear and tear of anvil, if edges have become rounded and parts are worn, they must be reground or replaced.

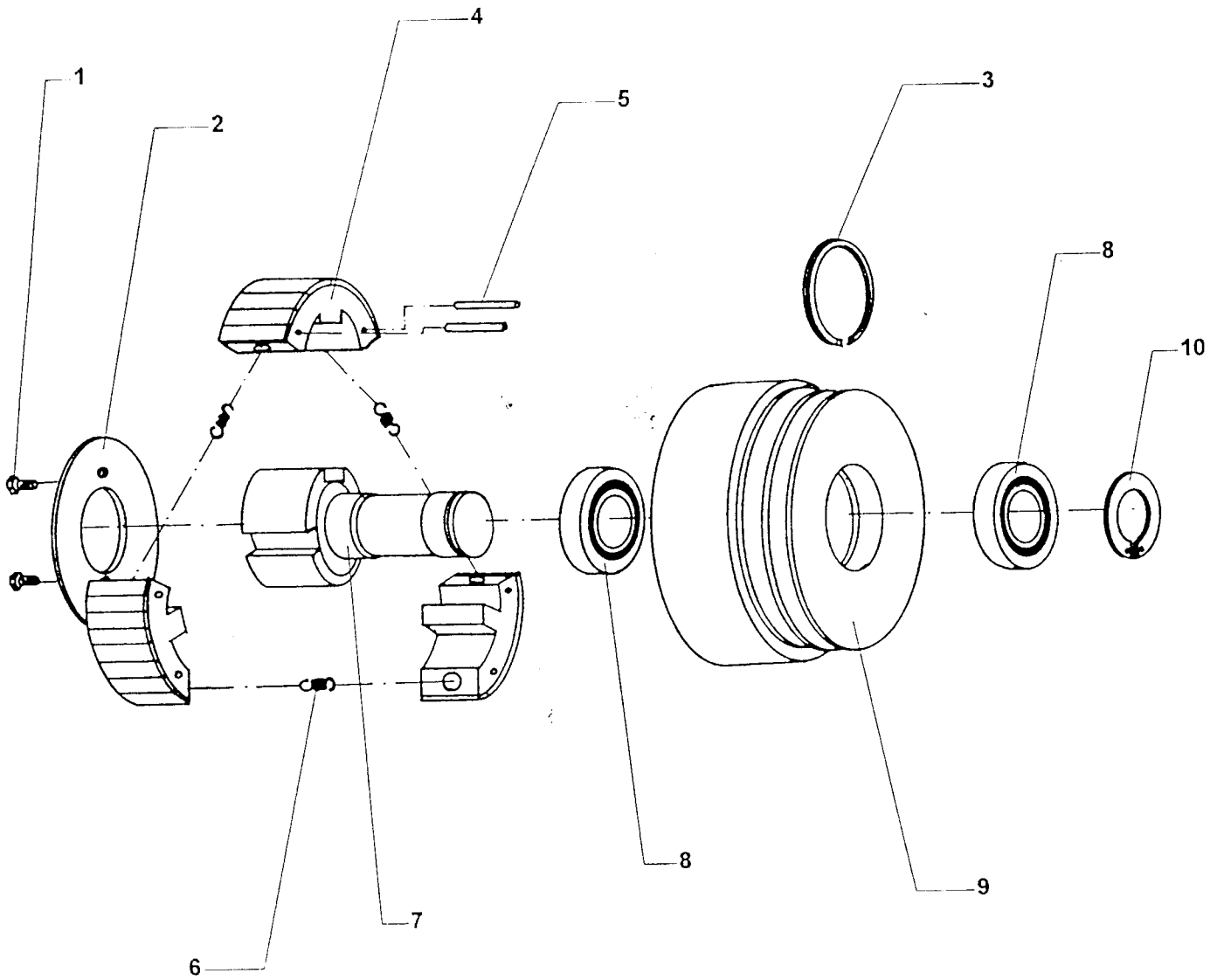


## PAF 101 F CENTRIFUGAL CLUTCH SPARE PARTS LIST

POS.	DENOMINATION	CODE
1	H.H. Screw M 6 X 10	
2	Cover 1900105	0231071012
3	Seeger ring I 68	0234206800
4	Complete clutch shoes set n°3 1900206	0231071016
5	Roll pin ø 5 x 25	
6	Spring 1900257	0231071017
7	Wheel hub 1900413	0231071018
8	Bearing SKF 6008 2 RS1	0229015012
9	Outer pulley 1900357	0231071019
10	Seeger ring E 40	0234104000



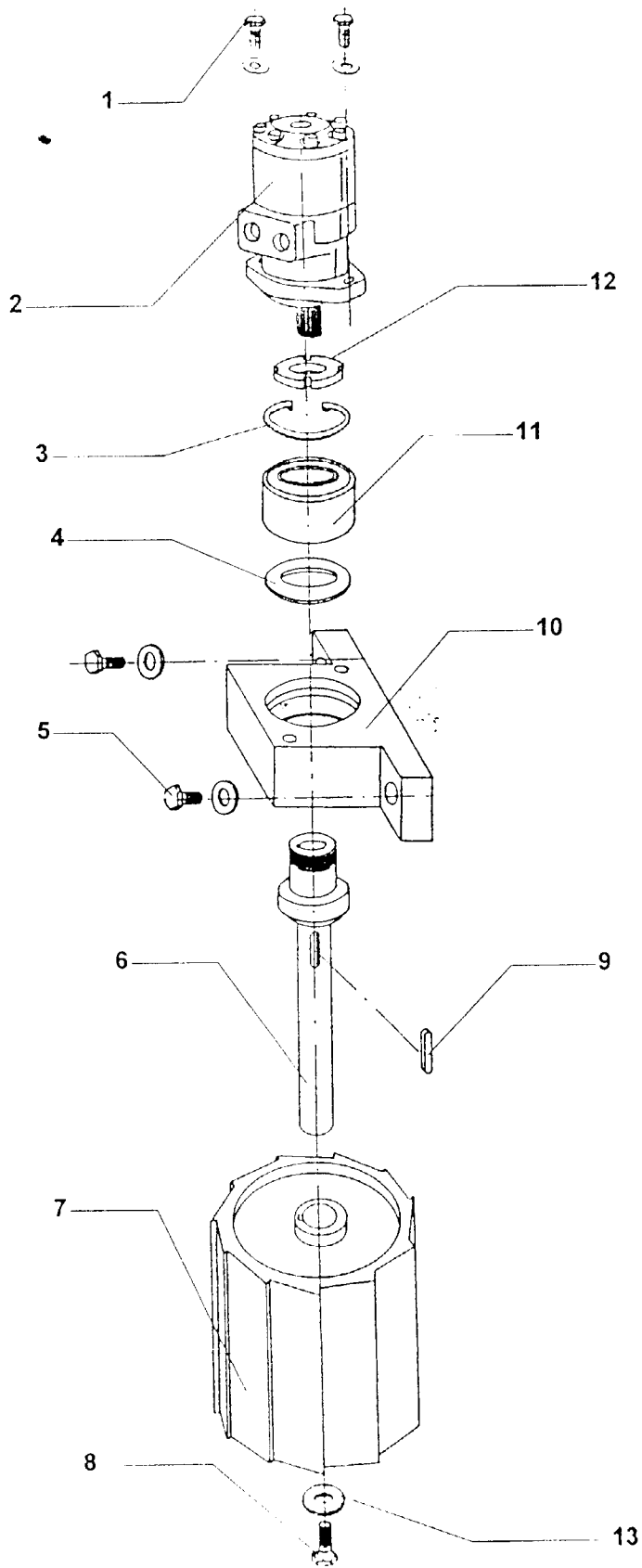
Honda engine GX 620 drive version : PAF 101 F CENTRIFUGAL CLUTCH  
SPARE PARTS SCHEME



## FIXED HYDRAULIC FEEDING ROLLER SPARE PARTS LIST

POs	DENOMINATION	CODE
1	S H C H Screw. M10 x 30	
2	Hydraulic motor AR 160 N C25	0414000020
3	Seeger 78 I.	0234207800
4	Spacer	0799040002
5	H.H. Screw .M10 x 25	
6	Shaft	0706680002
7	Fixed roller	0708268002
8	Screw M12 x 50	
9	Key 8 x 7 x 36	
10	Roller support	0719268002
11	Bearing SKF BAHB 633791	0229230001
12	Ring nut GUK8 M40 x 1,5	0220200040
13	Washer	3068010045

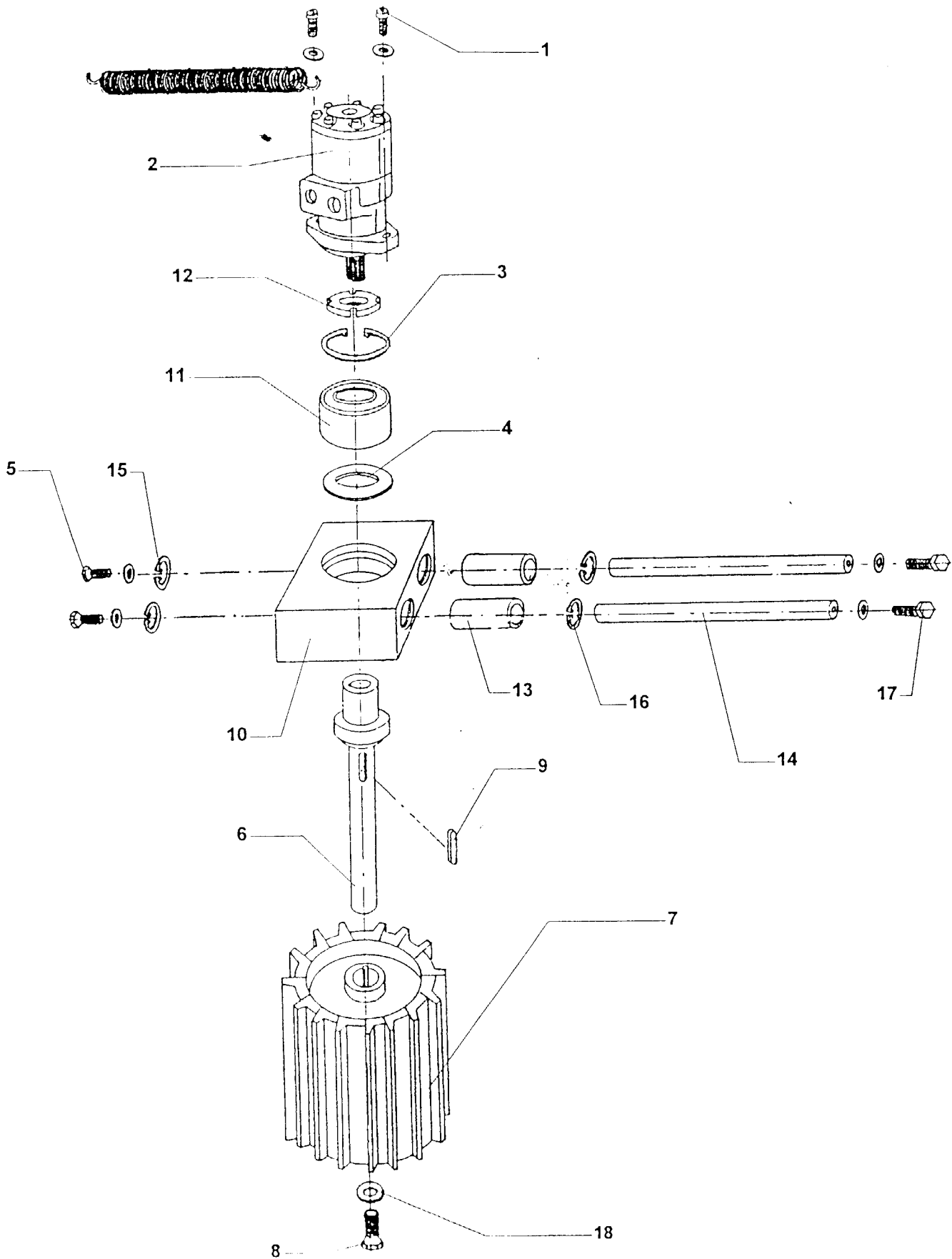
FIXED HYDRAULIC FEEDING ROLLER



## MOBILE HYDRAULIC FEEDING ROLLER SPARE PART LIST

POS.	DENOMINATION	CODE
1	S.H.C.H. Screw M10 x 30	
2	Hydraulic motor AR 160 N C25	0414000020
3	Seeger 78 I.	0234207800
4	Spacer	0799040001
5	H. H Screw M10 x 25	
6	Shaft	0706680003
7	Mobile roller	0708268001
8	S.H.C.H. screw M12 x 50	
9	Key 8 x 7 x 36	
10	Roller support	0719268003
11	Bearing SKF BAHB 633791	0229230001
12	Ring nut GUK8 M40 x 1,5	0220200040
13	Bronze sliding spacer $\phi_i = 30 \times \phi_e = 40$ L= 117.5	0707000001
14	Guide $\phi$ 30 L= 288.5	0716300001
15	Seeger 40 I	0234204000
16	Seeger 40 I	0234204000
17	H.H. Screw M10 x 25	
18	Washer	3068010044

MOBILE HYDRAULIC FEEDING ROLLER SPARE PART LIST



## EJECTING PIPE SPARE PART LIST

POs	DENOMINATION	CODE
1	Discharge deflector plate	3068020200
2	Adjusting lever	3068020300
3	Handwheel VL 155/70 B - M10	0235100001
4	Pipe	3068020109
5	Handwheel VL 155/70 P - M10x20	0235100013
6	PVC KNOB $\Phi=25 / 27$	0235400001

EJECTING PIPE

